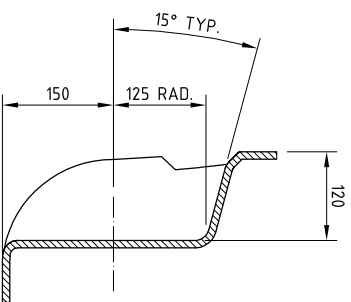
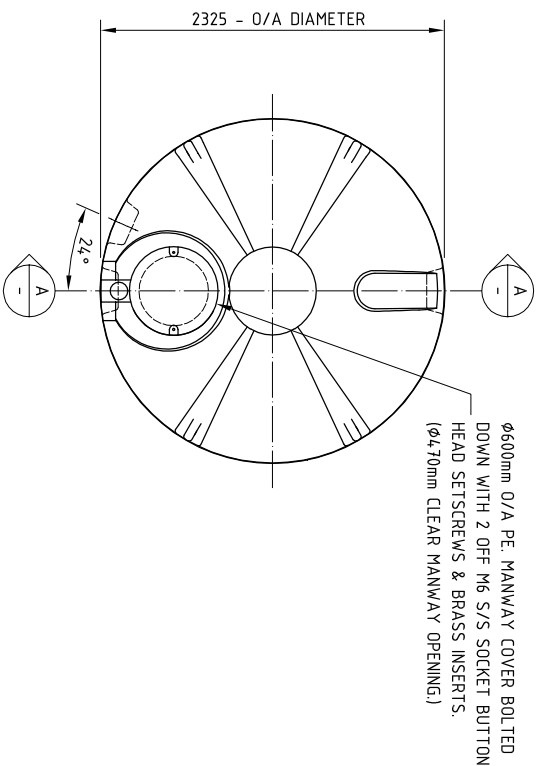


- GENERAL NOTES:**
1. TANK IS AVAILABLE WITH FITTINGS WHERE REQUESTED.
  2. ALL DIMENSIONS ARE APPROXIMATE AND ARE FOR INFORMATION ONLY.
  3. ALLOW FOR EXPANSION WHEN TANK IS FULL.
  4. SITE FOUNDATIONS TO ACCOMMODATE WEIGHT OF TANK PLUS CONTENTS.
  5. ENSURE ALL EXTERNAL PIPEWORK IS FULLY & INDEPENDENTLY SUPPORTED.



01	FIRST ISSUE	KG	BB	BB	31/08/11
ISSUE	MODIFICATION	BY	CHK	APV	DATE

# BALMORAL TANKS

Balmoral Park, Lornston, Aberdeen AB12 3GY, Scotland  
 Telephone +44 (0)1224 859000 Fax +44 (0)1224 859059  
 E-mail group@balmoral.co.uk



THIS DRAWING IS COPYRIGHT AND IS ISSUED ON CONDITION THAT IT IS NOT COPIED, REPRODUCED OR DISCLOSED TO A THIRD PARTY WITHOUT CONSENT IN WRITING OF BALMORAL GROUP LTD., ABERDEEN



FIRST ANGLE PROJECTION



THIRD ANGLE PROJECTION

ALL DIMENSIONS IN MILLIMETRES UNLESS STATED OTHERWISE - DO NOT SCALE IF IN DOUBT - ASK

TANK RANGE  
**WATER STORAGE TANKS**

DRAWING TITLE

10,000 - GENERAL ARRANGEMENT WITHOUT FITTINGS.

DRAWN BY

K. Gibson

CHECKED BY

B. Bakewell

APPROVED BY

B. Bakewell

DRAWING No.

RT11013-2-14

DATE

August 2011

SHEET SIZE

A3

TYPE

STD. DRG.

1

2

3

4

5

6

7

8