

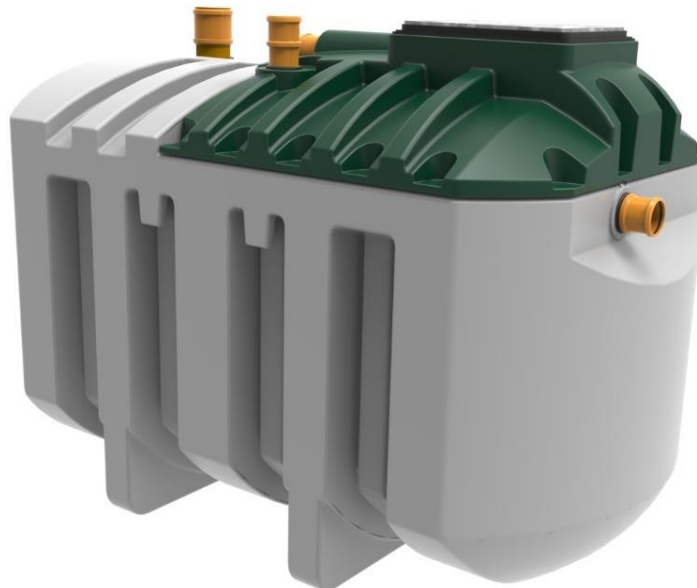
Harlequin® HydroClear

SEWAGE TREATMENT PLANT

HydroClear HC9 Wastewater Treatment Plant

HydroClear represents significant progress for the domestic wastewater treatment industry.

Contemporary design engineering and analysis software and state-of-the-art manufacturing facilities combine to create this unique product which dominates the sewage treatment plant market with class-leading BOD pollutant removal level of 97.5%.



Standard Features:

- ◆ Tank body moulded in one piece from durable medium density polyethylene material
- ◆ 110mm inlet and outlet connections
- ◆ Integrated lifting eyes for ease of handling and installation
- ◆ Fully secured 600x450mm pedestrian duty, flush fitting manhole cover comply with statutory regulations
- ◆ Above ground air blower housing delivers more reliable and efficient operation, and allows easy access for maintenance
- ◆ Easy access to the bubble diffuser within the tank
- ◆ Virtually silent operation
- ◆ Cost effective installation
- ◆ HydroClear owners can determine their own de-sludge intervals giving potential cost savings
- ◆ Mechanically reliable with no moving parts or electrics within the tank
- ◆ Certified to EN12566-3

Harlequin® HydroClear

SEWAGE TREATMENT PLANT

HydroClear HC9 Wastewater Treatment Plant

Optional Equipment:

- ◆ Air blower function alarm
- ◆ Pumped outlet
- ◆ 300mm manhole riser(s). Max 3 risers (800mm) on a gravity tank or 2 risers (550mm) on a pumped outlet*

* Maximum invert level 2m. Use 1200mm concrete rings to achieve inverts below max. number of risers.

Technical Data:

	Efficiency	Effluent
Treatment Efficiency	COD	94.4 %
	BOD ₅	97.5 %
	NH ₄ -N	95.0 %
	N _{TOT}	57.8 %
	Phosphorus	43.4 %
	SS	97.0 %
Nominal hydraulic daily load	1,350Litres / day	
Nominal organic daily load	465g BOD ₅ / day	
Inhabitants served	7 - 9	
Desludging interval	12 months *	
Electrical consumption	1.1 kWh / day	
Power requirements	230V 76W 1.0A (start-up current)	
Volumes (at operational height)	Primary settlement – 2295 Litres Aeration chamber – 1245 Litres Final settlement – 935 Litres	
Overall dimensions	L 2900 W 1620 H 2000 mm	
Standard inlet depth	500 mm	
Standard outlet depth	660 mm	
Depth from invert to base	1500 mm	
Pipe diameter	110 mm	
Net Weight	430 kg	

* de-sludge interval up to 12 months depending on the number of inhabitants

Issued By:

Harlequin Manufacturing Limited
21 Clarehill Road, Moira, Co. Armagh, N.Ireland, BT67 0PB
T: +44 (0)28 9261 1077
W: www.harlequin-mfg.com
E: info@harlequin-mfg.com